



**WARN INDUSTRIES, INC.
INSTALLATION INSTRUCTIONS FOR THE**

FULL FLOAT DRIVE FLANGE KIT

As you read these instructions, you will see **NOTES**, **CAUTIONS** and **WARNINGS**. Each message has a specific purpose. **NOTES** are additional information to help you complete a procedure. **CAUTIONS** are safety messages that indicate a potentially hazardous situation which, if not avoided, may result in minor or moderate injury. A **CAUTION** may also be used to alert against unsafe practice. **WARNINGS** are safety messages that indicate a potentially hazardous situation, which, if not avoided could result in serious injury. **CAUTIONS** and **WARNINGS** identify the hazard, indicate how to avoid the hazard, and advise of the probable consequence of not avoiding the hazard. **PLEASE WORK SAFELY!**

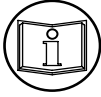
WARN INDUSTRIES, INC. • 12900 SE CAPPS ROAD • CLACKAMAS, OR 97015-8903

(503) 722-1200 • CUSTOMER SERVICE LINE 1-888-722-6730 • FAX (503) 722-3051

SAFETY PRECAUTIONS



CAUTION



Read instructions thoroughly before beginning installation.

These instructions provide guidelines to install the WARN Full Float Drive Flange Kit. There are **NOTES**, **CAUTIONS**, and **WARNINGS** which should be followed during installation to avoid possibility of personal injury or damage to the vehicle. During installation, standard safety precautions and equipment should be used where appropriate. Because the skill and experience of the installer and the tools used can vary widely, it is impossible to anticipate all conditions under which this installation is made or to provide cautions for all possible hazards. If your installation varies from the instruction, you must be completely satisfied that your safety or the operation of the vehicle will not be compromised.

NOTE: If you have questions concerning the installation of the Warn Full Float Drive Flange Kit, call our toll-free number (1-888-722-6730) for assistance.

TOOLS AND MATERIALS NEEDED

Safety Goggles	For eye protection
7/64" Hex Key	For removing existing ½ Ton Hublock
9/64" Hex Key	For removing existing 1 Ton Hublock
Snap Ring Pliers	For removing retaining ring from axle shaft
Small Flathead Screwdriver	For removing Hublock retaining ring
#8 TORX Driver	For installing Drive Flange Cap
Torque Wrench	For proper tightening of TORX screws
Shop Rags	For wiping parts clean



WARNING



WEAR SAFETY GOGGLES. Broken or slipping tools can cause eye or other injury.

HUBLOCK REMOVAL

NOTE: The following instructions are for doing one side of the axle. Both sides of the axle can be done simultaneously.

1. Turn the ignition key OFF.
2. Block wheels.
3. Remove the 6 socket head cap screws from the hublock cap assembly. Remove cap assembly. (Figure 1, Flag 1)
4. Remove retaining ring from the end of axle shaft. (Figure 1, Flag 2)

5. Remove the lock ring from groove in wheel hub using a small flathead screwdriver. (Figure 1, Flag 3)
6. Slide hublock body assembly from the wheel hub.

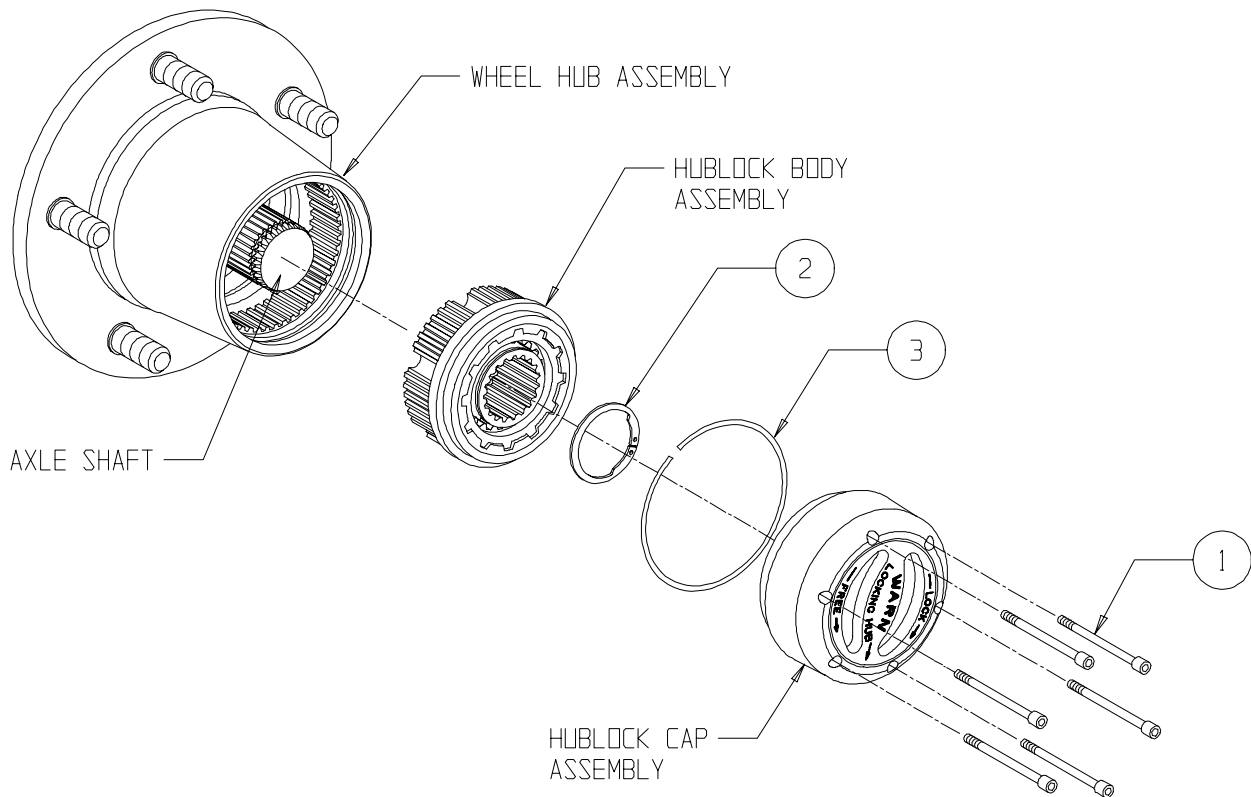


Figure 1. Hublock Removal

PREPARATION FOR ASSEMBLY

1. Remove any dirt or grease from splines inside of wheel hub.

DRIVE FLANGE INSTALLATION


NOTE: Do not add grease to Drive Flange.


1. Install Wear Washers over axle shaft.
2. Push Drive Flange in so it engages splines in wheel hub and lock ring groove in wheel hub is visible.
Note: The axle shaft may need to be rotated slightly to allow alignment of splines.
3. Using snap ring pliers, install axle retaining ring. (Figure 2, Flag 2)
3. Insert Plate.
4. Install large lock ring in groove in wheel hub. (Figure 2, Flag 1)

NOTE: Ensure that large lock ring is fully seated. The lock ring can be removed with a small screwdriver.

5. Apply light coating of lubricant to Drive Flange Seal, (i.e. oil, grease, Anti-Seize). (Figure 2, Flag 3)
6. Insert Drive Flange Cap into the wheel hub.

- 7. Align holes in Cap with holes in Plate.
- 8. Install the three #8 TORX head screws. Torque to 25-30 **INCH-lb.** (Figure 2, Flag 4)

 **WARNING**

 Excess force can cause tool slippage or breakage and damage to the screws. **DO NOT OVERTORQUE SCREWS.** Broken or slipping wrenches can cause eye or other injury.

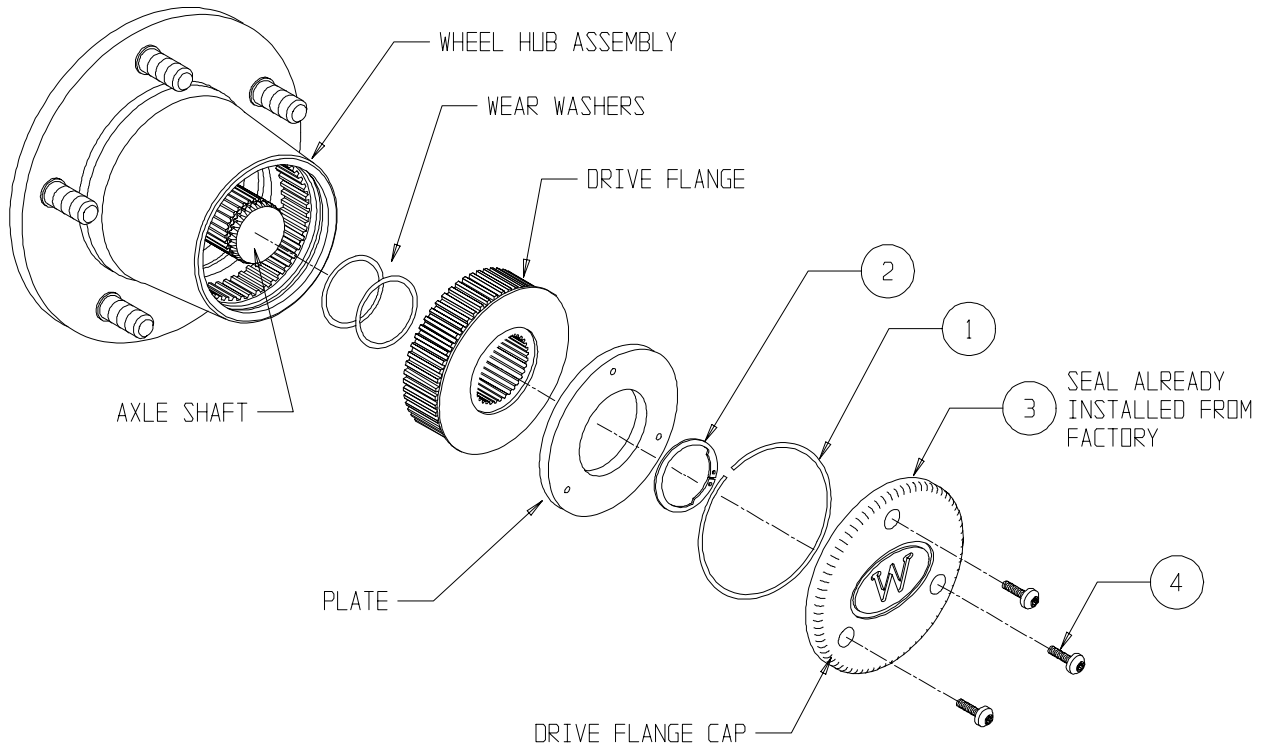


Figure 2. Drive Flange Installation